

大成長城企業股份有限公司 法人說明會



大成為您健康生命努力
DaChan Enhances Your Healthy Life.



Disclaimer

- 1. This presentation contains certain forward-looking statements that are based on current expectations and are subject to known and unknown risks and uncertain ties that could cause actual results to differ from those expected or implied by such statements.**
- 2. Except as required by law, we undertake no obligation to update any forward-looking statements, whether as a result of new information, future events or others.**



簡報大綱

- **Financial Summary**
- **Capital Expenditure**
- **Development Strategy**
- **Q & A**



Financial Summary



2013~2019.1-9 Income Statement (Consolidated)

Amount: Million NTD	2013	2014	2015	2016	2017	2018	2019.1-9
Net Revenue	90,478	91,741	78,252	75,796	75,931	72,443	56,773
Cost of revenue	82,823	83,743	69,848	65,868	65,698	62,355	48,106
Gross Profit	7,655	7,998	8,404	9,928	10,233	10,088	8,667
Operation Exp.	6,815	6,849	6,862	7,184	7,220	7,815	6,052
Operation Income	840	1,149	1,542	2,744	3,013	2,273	2,615
Net Non-operating Income	1,753	343	(573)	397	327	758	183
PBT	2,593	1,492	969	3,141	3,340	3,031	2,798
PAT	2,257	1,000	486	2,561	2,653	2,414	2,188
PAT (Attributable to Shareholder of the Parent)	1,796	1,163	591	2,058	2,239	2,010	1,808
EPS	3.42	1.70	0.87	3.01	3.28	2.75	2.32



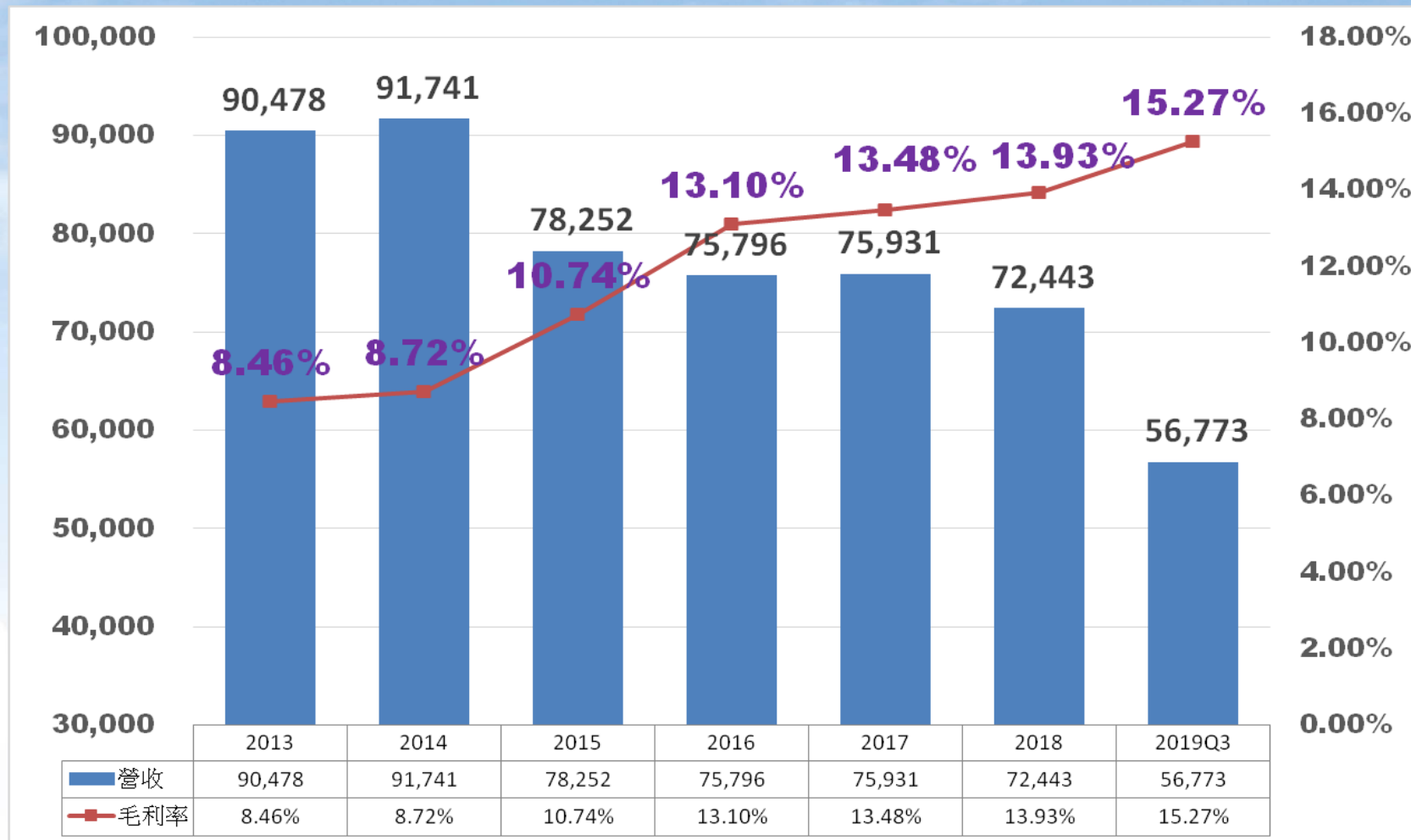
2013~2019.1-9 Income Statement (Consolidated)

Year	Revenue	Gross Profit		PAT (Attributable to Shareholder of the Parent)		EPS
		Amt.	%	Amt.	%	
2013	90,478	7,655	8.46%	1,796	1.99%	2.63
2014	91,741	7,998	8.72%	1,163	1.27%	1.70
2015	78,252	8,404	10.74%	591	0.76%	0.87
2016	75,796	9,928	13.10%	2,058	2.72%	3.01
2017	75,931	10,233	13.48%	2,239	2.95%	3.28
2018	72,443	10,088	13.93%	2,010	2.77%	2.75
2019Q3	56,773	8,667	15.27%	1,808	3.18%	2.32



2013~2019.1-9 Performance (Consolidated)

■ Revenue (Million NTD)
■ Gross Profit(%)





2013年~2018 Income Statement (Parent Company Only)

Year	Revenue (Million NTD)	Gross Profit		Operation Income		PBT		EPS
		Amt.	%	Amt.	%	Amt.	%	
2013	23,471	2,144	9.13%	854	3.64%	1,796	7.65%	2.63
2014	23,834	2,378	9.98%	969	4.07%	1,163	4.88%	1.7
2015	22,339	2,424	10.85%	1,017	4.55%	591	2.65%	0.87
2016	24,514	3,303	13.47%	1,694	6.91%	2,058	8.40%	3.01
2017	25,110	3,553	14.15%	1,799	7.16%	2,239	8.92%	3.28
2018	26,372	3,266	12.38%	1,441	5.46%	2,010	7.62%	2.75



2019.1-9 Income Statement

Amount : Million NTD	2019年1-9		2018年1-9		Difference
	Amt.	%	Amt.	%	%
Revenue	56,773	100.0%	53,361	100.0%	6.4%
Cost	48,106	84.7%	45,786	85.8%	5.1%
Gross Profit	8,667	15.3%	7,575	14.2%	14.4%
Operation Exp.	6,052	10.7%	5,892	11.0%	2.7%
Operation Income	2,615	4.6%	1,683	3.2%	55.4%
Net Non-operation Income	183	0.3%	574	1.1%	-68.1%
PBT	2,798	4.9%	2,257	4.2%	24.0%
PAT	2,188	3.9%	1,839	3.4%	19.0%
PAT (Attributable to Shareholder of the Parent)	1,808	3.2%	1,554	2.9%	16.4%
EPS	2.32		2.12		



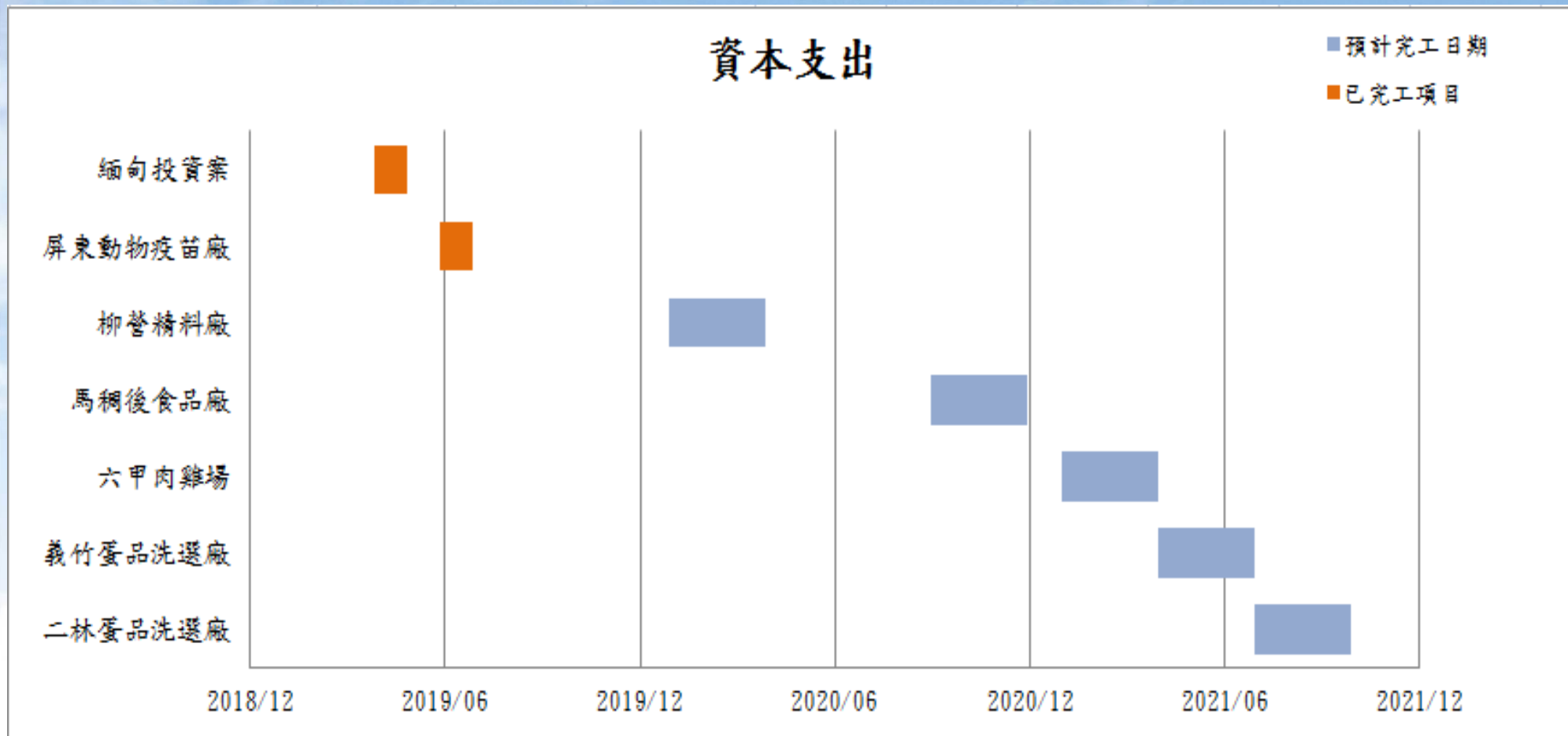
2019.9 Balance Sheet

Amount: Million NTD	2019Q3		2018Q3	
	Amt.	%	Amt.	%
Cash and Cash Equivalent	3,055	6%	2,702	6%
Accounts and Notes Receivable	6,232	13%	6,228	15%
Inventories	7,441	16%	7,171	17%
Total Other Current Assets	5,429	11%	5,241	12%
Total Current Assets	22,157	47%	21,343	51%
Total Non-Current Assets	25,448	53%	20,836	49%
Fixed Assets	18,899	40%	13,863	33%
Total Assets	47,605	100%	42,178	100%
Short-term Loan	9,633	20%	6,713	16%
Accounts and Notes Payable	4,909	10%	5,380	13%
Total Other Current Liabilities	5,852	12%	4,643	11%
Total Current Liabilities	20,394	43%	16,736	40%
Long-term Debt	2,272	5%	3,520	8%
Total other Non-Current Liabilities	1,132	2%	289	1%
Total Non-Current Liabilities	3,404	7%	3,810	9%
Total Liabilities	23,798	50%	20,545	49%
Total Shareholder's Equity	23,807	50%	21,633	51%



Capital Expenditure

Capital Expenditure





Development Strategy



大成集團經營範圍

From Farm To Table



Dachan has established a complete supply chain and a global operation mechanism. Dachan is able to implement a full-dimensional, inter-dependent food chain structure that integrates the three links of feed, meat and food.

The successful vertical-integrated-broiler-rearing-program establishes a completely supply chain which starts from breeding, hatching, contract rearing, feed production nutraceutical feed, rearing supervision, electrical slaughter to end-product processing.

大成為您健康生命努力
DaChan Enhances Your Healthy Life.



Development Strategy

- **Egg Business**
- **Flour Business**
- **Food Business**
- **Southbound Allocation**



穀物ソリューション・カンパニー



昭和産業



強強聯手齊努力 食品科技再升級



Egg Business

- **2013: Egg Department**
- **2014: Purchase Yizhu Fuyuan Chicken Farm**
- **2015: Guantian Egg Washing Plant**
- **2017: Taiwan Quality Egg Company become Majority-owned subsidiary and was totally controlled in 2018**
- **2018: Zhong Yi Food Co., Ltd.**
- **2019: Signed cooperative investment contract with Showa Sangyo Co., Ltd.**

Raw Edible Eggs

Quality Objectives : Raw Edible Eggs



Key Factors

1. Freshness
2. Temperature
3. Environment



•Feed Check

•Quality Management
•Vaccine Plan

•Temperature Control
•Egg Washing and Sterilizing

•Logistics

•Good Eggs

Allocation





Development Strategy

- Egg Business
- **Flour Business**
- Food Business
- Southbound Allocation



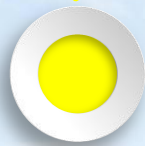
Development

1960



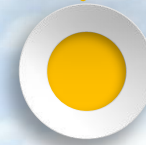
Flour Business Started

1990



Expanded Business in Main land China

2003



Cooperated with Showa Sangyo In Tianjin

2019



Cooperated with Showa Sangyo In Taiwan



Kouchan Flour Company



Operation Objectives

- R&D Capabilities
- Technical Service Team





Development Strategy

- Egg Business
- Flour Business
- **Food Business**
- Southbound Allocation



New Processed Food Factory





New Year Dishes



大成為您健康生命努力
DaChan Enhances Your Healthy Life.



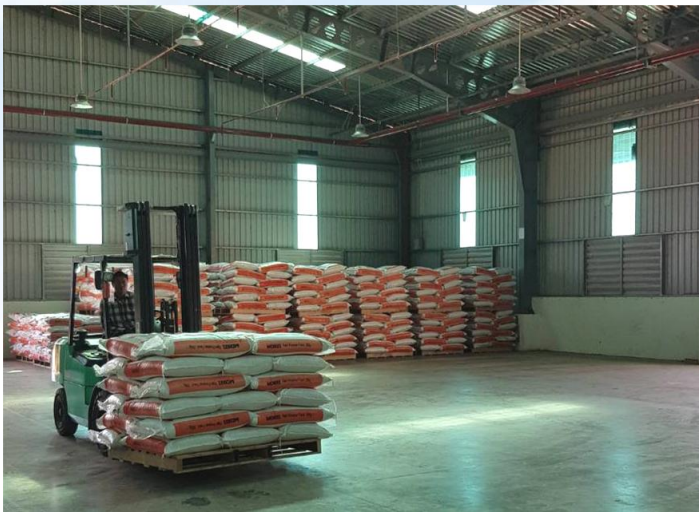
Development Strategy

- **Egg Business**
- **Flour Business**
- **Food Business**
- **Southbound Allocation**



Myint Dachan

- Go into operation in May 2019



大成為您健康生命努力
DaChan Enhances Your Healthy Life.



Marine Restaurant





Q & A